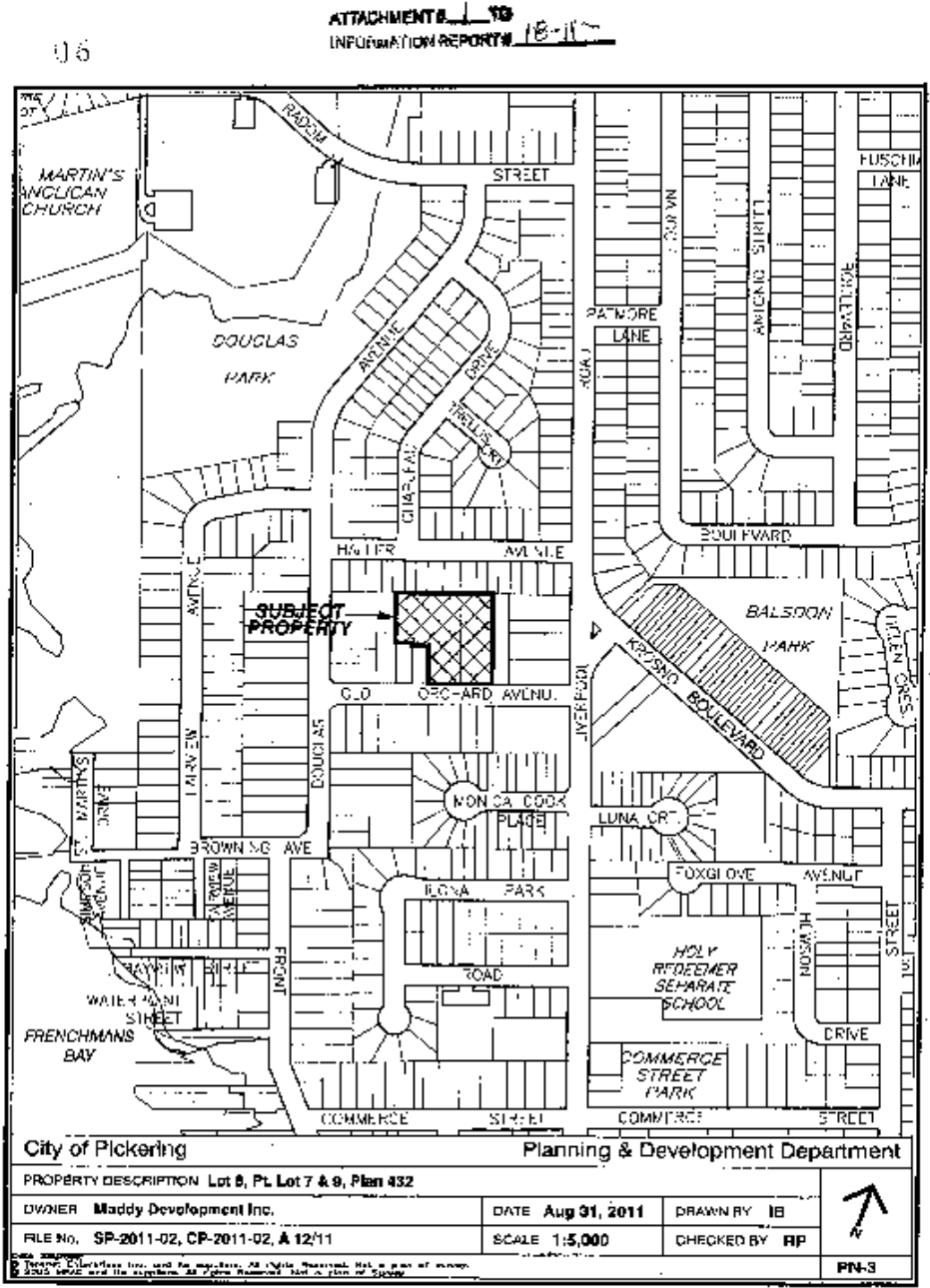
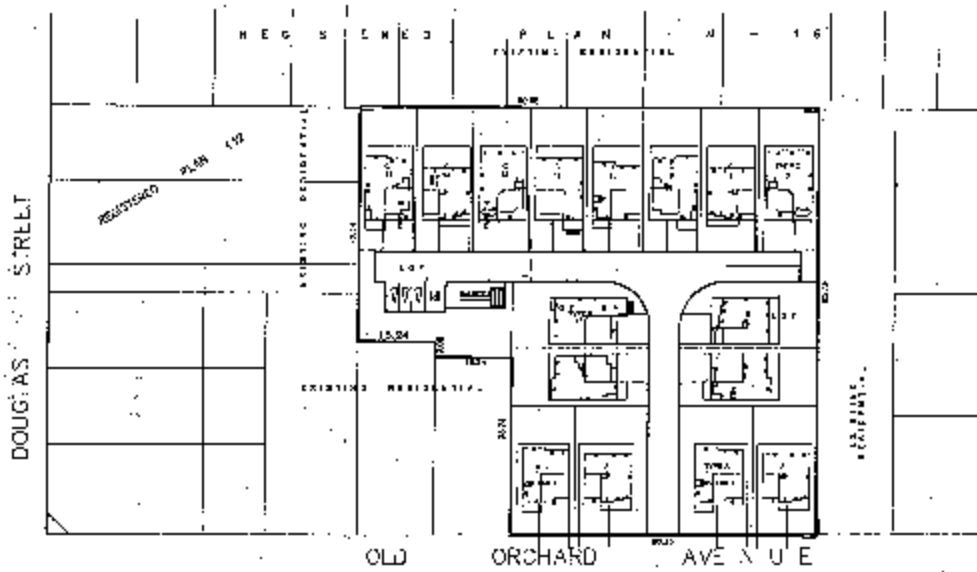


# Proposed Old Orchard Avenue Development

Located at 1290 & 1292 Old Orchard Avenue, this proposed development would see 16 lots having a minimum lot frontage of 11.0 metres, with four lots fronting Old Orchard Avenue and 12 lots fronting an internal private common element condominium road.



INFORMATION COMPILED FROM APPLICANT'S  
SUBMITTED SITE PLAN  
MADDY DEVELOPMENT INC.  
SP-2011-02 & CP-2011-02 & A 12/11

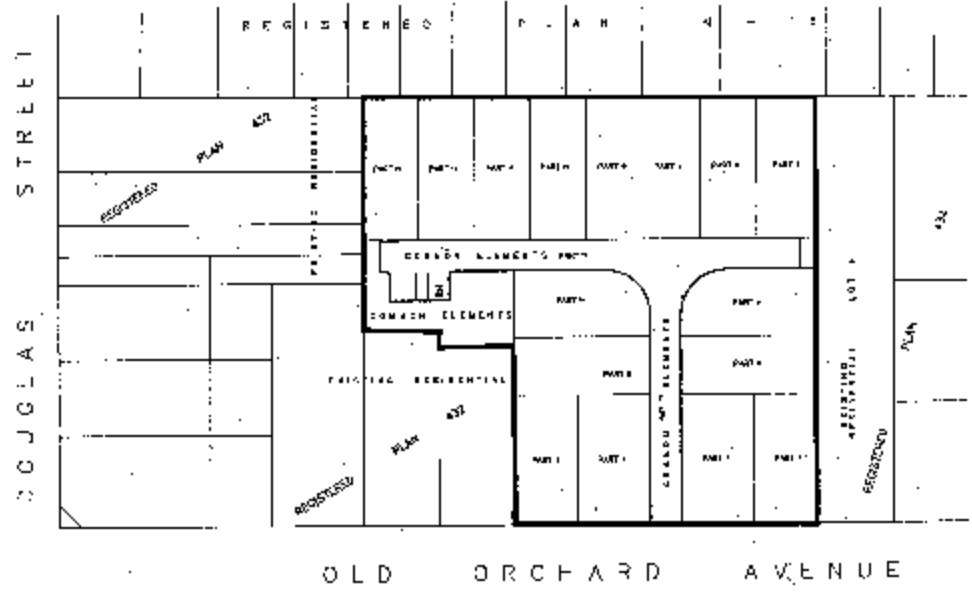


SEVERAL SCALE COPIES OF THE APPLICANT'S  
SUBMITTED PLAN ARE AVAILABLE FOR REVIEW AT  
THE OFFICE OF THE CITY ENGINEER & PLANNING DEPARTMENT.  
THE CITY ENGINEER & PLANNING DEPARTMENT  
COUNCIL & BOARD OF SUPERVISORS  
ADMINISTRATIVE & SUPPORT SERVICES  
SEP 1, 2011

02

ATTACHMENTS of 19  
OFFICIAL REPORT 18-11

INFORMATION COMPILED FROM APPLICANTS  
SUBMITTED CONDOMINIUM PLAN  
MADDY DEVELOPMENT INC.  
SP-2011-02 & CP-2011-02 & A 12/11



NOTICE: THESE COPIES OF THE APPLICANTS  
SUBMITTED PLAN ARE AVAILABLE FOR INSPECTION  
BY THE CITY OF PORTLAND, PLANNING & DEVELOPMENT DEPARTMENT.  
THE PLAN WAS PROVIDED BY THE CITY OF PORTLAND  
PLANNING & DEVELOPMENT DEPARTMENT.  
CORRECTIONS & SUPPLY DIVISION  
MAY 1, 2011